

AP035 PC Download Manual

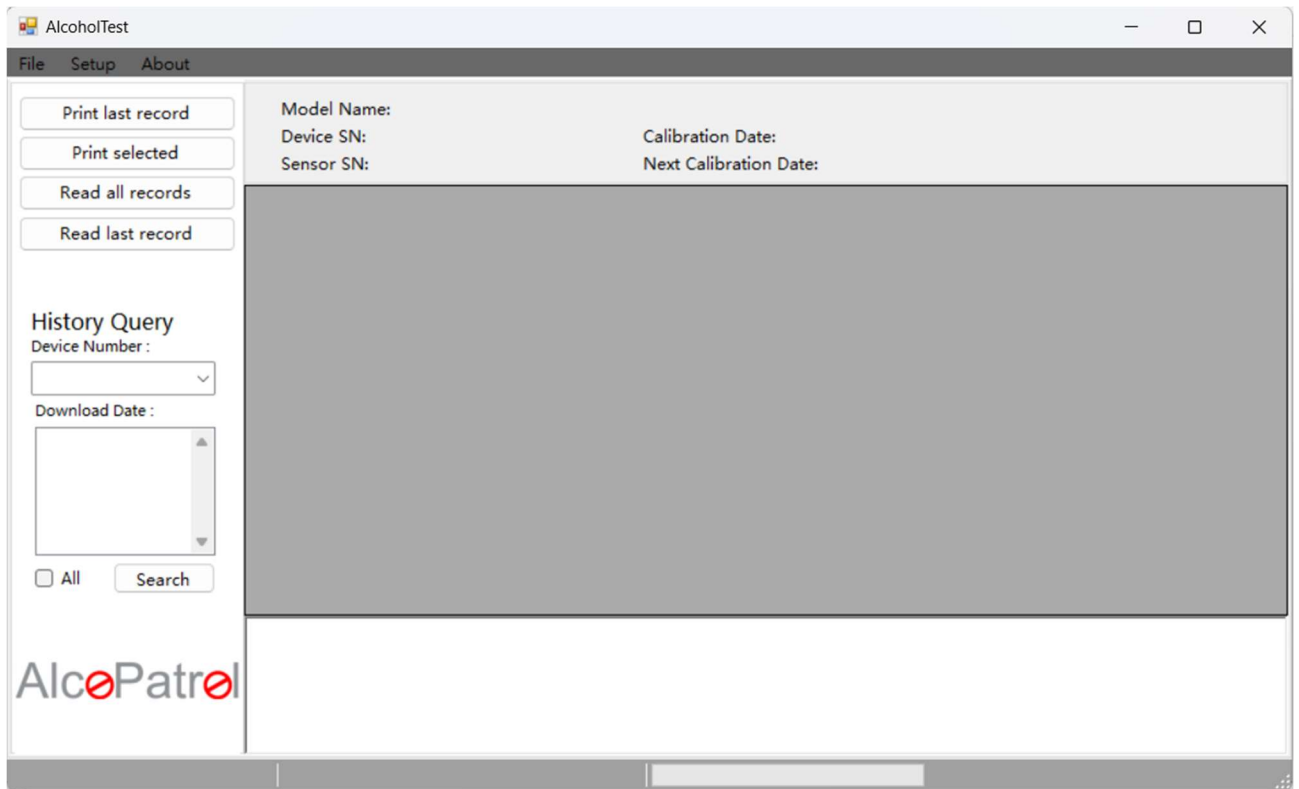
1. Copy and unzip the PC software to a folder. .
2. Power OFF the AP035 device,
3. Plug the USB cable to connect the computer and AP035 device. (Must power off)



4. Press "Power key" + "Left" Key and hold until see "USB flash disk is connecting..."



- Run the PC software. AlcoholTest035A.exe (right click mouse and “Run as Administrator”)



- Click “Read all records”

Model Name: AP 035

Device SN: 22100001

Sensor SN: 22100001

Calibration Date: 2022-10-18

Next Calibration Date: 2023-10-18 17:26:22

	Counter	Num	Measure Mode	Alcohol Context	Measure Date	Measure Time	Station	Location
▶	0	1	Passive Test	0.000 mg/L	2021-03-06	09:11:16		
	1	2	Active Test	0.000 mg/L	2020-07-17	15:30:36		
	2	3	Screening Test	0.000 mg/L	2020-07-17	15:30:50		
	3	4	Active Test	0.000 mg/L	2021-01-29	22:17:46		
	4	5	Active Test	0.000 mg/L	2021-01-29	22:35:37		
	5	1	Passive Test	0.000 ‰(BAC)	2058-58-58	58:58:58		
	6	2	Active Test	0.000 ‰(BAC)	2017-17-17	17:17:17		
	7	3	Passive Test	0.000 ‰(BAC)	2042-42-42	42:42:42		
	8	4	Passive Test	0.000 ‰(BAC)	2004-04-04	04:04:04		
	9	5	Passive Test	0.000 ‰(BAC)	2006-06-06	06:06:06		

2023-03-06 17:14:27 : Read records ...

2023-03-06 17:14:27 : read records finish !!!

*DO NOT plug or unplug the cable when AP035 turned ON.

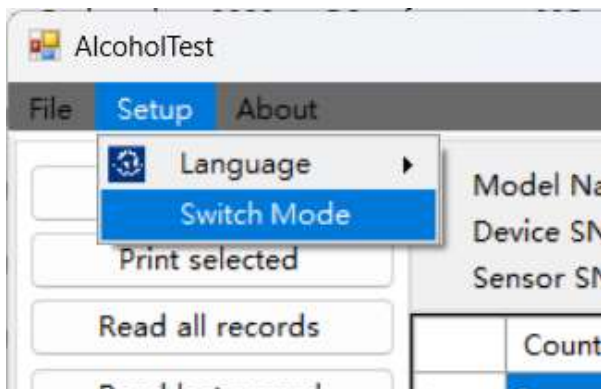
7. Export the records: File – Save

Automatic back up file inside the folder” RECORD”

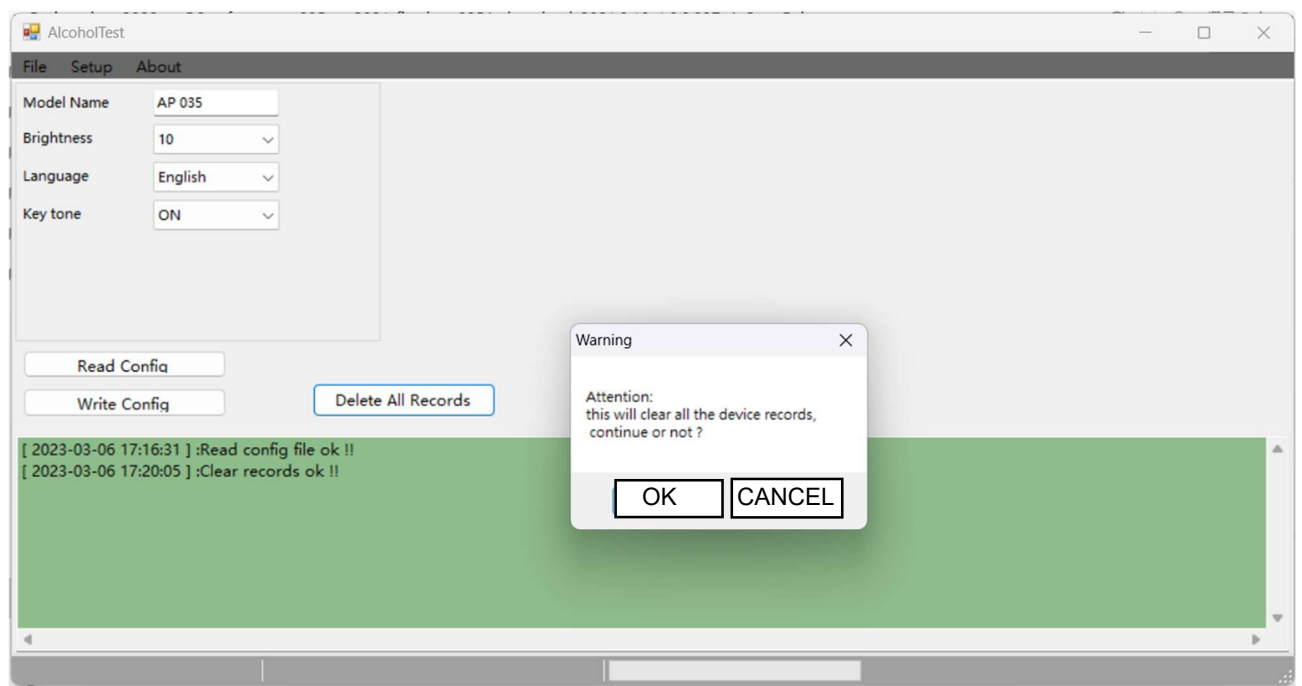
8. Delete the device records:

After download, and make sure the device stored to computer. And export to csv file or print out.

8.1 Setup-switch mode



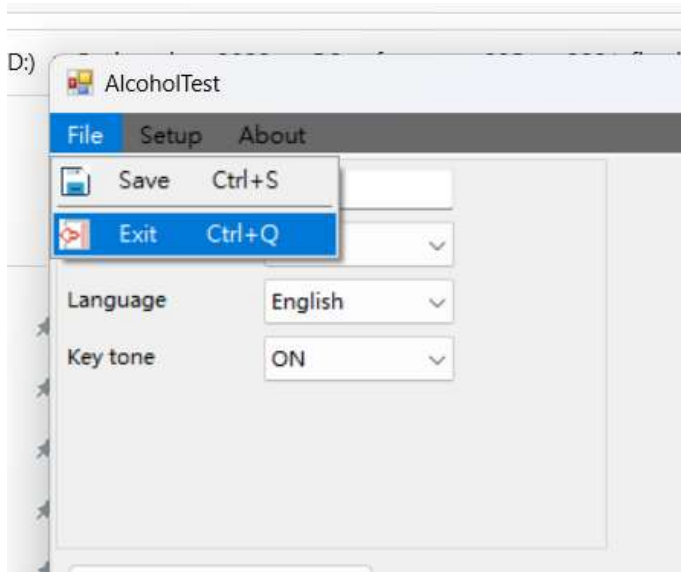
8.2 “Click Delete all records”



Remark: the deleted record and photos can not recover after delete.

9. Finish operation.

Click "File" and "exist" the menu.



10. Press Power key, the device will reboot.

11. After reboot, please press power key to power off the device,

12. Unplug the USB cable from AP035\